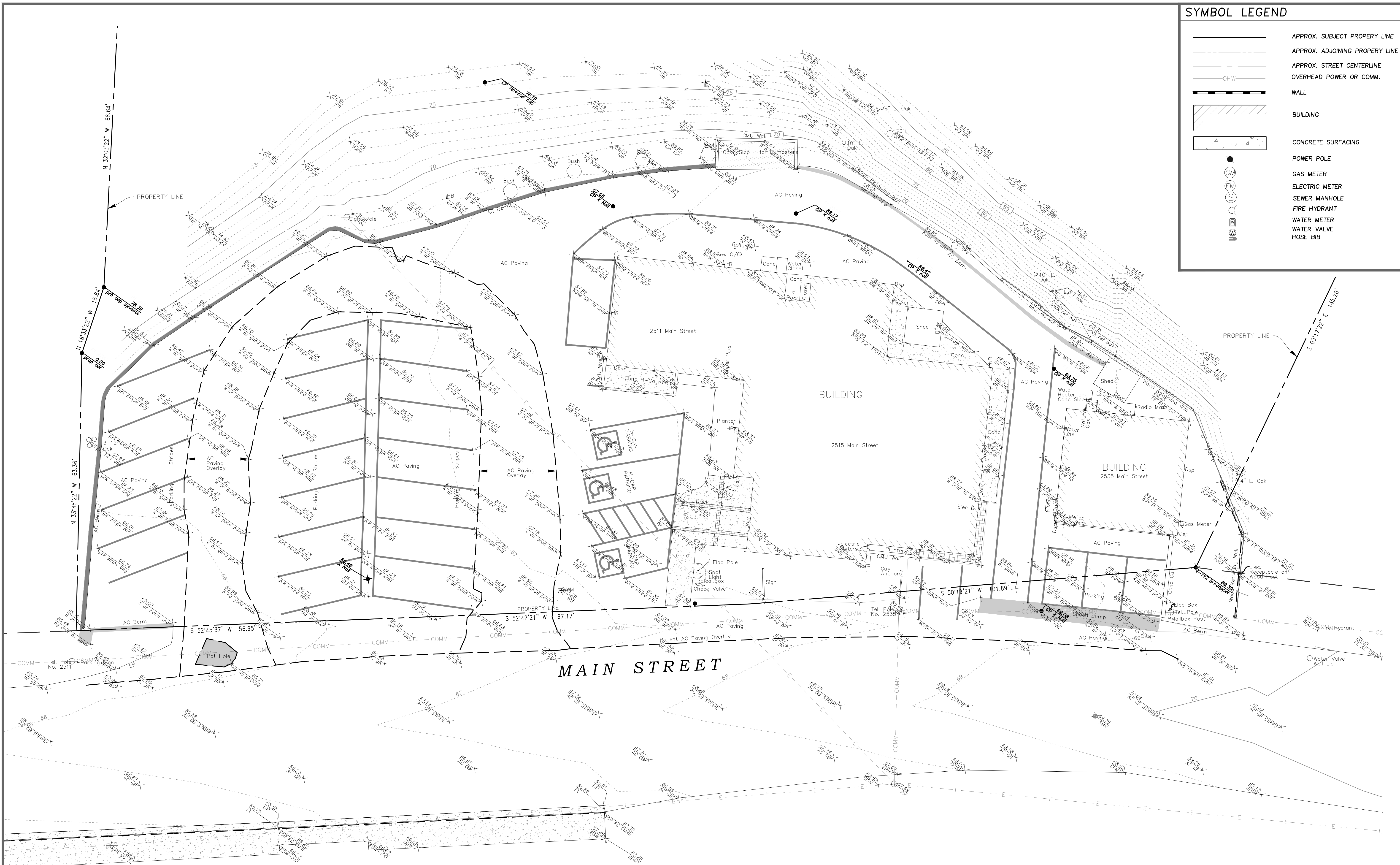




SYMBOL LEGEND	
[Symbol]	APPROX. SUBJECT PROPERTY LINE
[Symbol]	APPROX. ADJOINING PROPERTY LINE
[Symbol]	APPROX. STREET CENTERLINE
[Symbol]	OVERHEAD POWER OR COMM.
[Symbol]	WALL
[Symbol]	BUILDING
[Symbol]	CONCRETE SURFACING
[Symbol]	POWER POLE
[Symbol]	GAS METER
[Symbol]	ELECTRIC METER
[Symbol]	SEWER MANHOLE
[Symbol]	FIRE HYDRANT
[Symbol]	WATER METER
[Symbol]	WATER VALVE
[Symbol]	HOSE BIB



REVISIONS:	DATE:	DESCRIPTION:
1)	9/17/2021	UPDATE LEGEND AND ABBREVIATIONS TO LEGEND
2)	10/28/2021	ADDITIONAL UPDATES TO LEGEND AND ABBREVIATIONS

LOCATION:	DRAWN:	CHECKED:
2515 MAIN STREET CAMBRIA, CA APN(S): 013-241-024	DW	DB
PROJECT NO. 17075	CLIENT C.C.H.C. DISTRICT	

**CAMBRIA COMMUNITY HEALTH**

TOPOGRAPHIC MAP AND SITE SURVEY

SHEET: OF: 1

DATE: AUG. 27, 2021

**NOTES**

- TOPOGRAPHIC AND BOUNDARY SURVEY WAS PERFORMED.
- UNDERGROUND UTILITIES SHOWN HEREON (IF ANY) ARE BASED ON ABOVE-GROUND STRUCTURES, USA MARKINGS, AND RECORD DRAWINGS ONLY. ACTUAL LOCATION MAY VARY.
- ADDITIONAL UNDERGROUND UTILITY SERVICE LINES TO THE PROPERTY MAY EXIST. FOR INFORMATION REGARDING UTILITY LOCATIONS, SIZE, DEPTH, CONDITION, AND CAPACITY, CONTACT UTILITY OWNERS.

FIELD SURVEY PERFORMED: AUGUST 2021

**LEGAL DESCRIPTION**

BEING A PORTION OF THE "SANTA ROSA RANCHO" AS FILED IN BOOK B, PAGE 8 OF MAPS AND RECORDED IN THE OFFICE OF THE RECORDER OF SAN LUIS OBISPO COUNTY, CALIFORNIA.

**UTILITY DISCLAIMER**

EXISTING UTILITY LOCATIONS SHOWN HERON ARE APPROXIMATE ONLY. IT SHALL BE THE CONTRACTOR'S RESPONSIBILITY TO DETERMINE THE EXACT VERTICAL AND HORIZONTAL LOCATION OF ALL EXISTING UNDERGROUND UTILITIES PRIOR TO COMMENCING CONSTRUCTION. NO REPRESENTATION IS MADE THAT ALL EXISTING UTILITIES ARE SHOWN HERON. THE ENGINEER ASSUMES NO RESPONSIBILITY FOR UTILITIES NOT SHOWN IN THEIR PROPER LOCATION.

ABBREVIATIONS		
AC	ASPHALT CONCRETE	NTS
ASW	BACK OF WALK	CONC
CC	CHAIN LINK FENCE	CP
CO	CONCRETE	CS
COM	COMMUNICATIONS	CSB
ELEC	ELECTRIC	CSM
EP	EDGE OF PAVEMENT	CSW
FL	FINISHED FLOOR	CSX
FLG	FINISHED GRADE	CSY
FLW	FLOW LINE	CSZ
FS	FIRE SURFACE	CSA
FW	FIRE WATER	CSB
GFF	GARAGE FINISHED FLOOR	CSM
GM	GAS METER	CSW
HP	HIGH POINT	CSX
IP	INVERT	CSY
LP	LOW POINT	CSZ

**BENCHMARK**

TBM = A FOUND 4" BRASS DISC STAMPED R259 ON A 6"x6" CONCRETE BLOCK +/- 15' FOR THE SOUTHWEST CORNER OF THE PROPERTY. HAVING AN ELEV. OF 65.54' (NAVD88)

PROJECT BENCH MARK IS NGS BRASS DISK STAMPED 2693, RESET 1982, ELEV.=67.91' (NAVD88).

**BASIS OF BEARINGS**

THE "BASIS OF BEARINGS" FOR THIS MAP AND SURVEY IS THE SOUTHWESTERLY LINE OF THIS PARCEL AS SHOWN ON THAT RECORD OF SURVEY RECORDED IN BOOK 59, PAGE 06 AND FILED IN THE OFFICE OF THE RECORDER OF SAN LUIS OBISPO COUNTY AND SHOWN HEREON AS N33°48'26"W

