



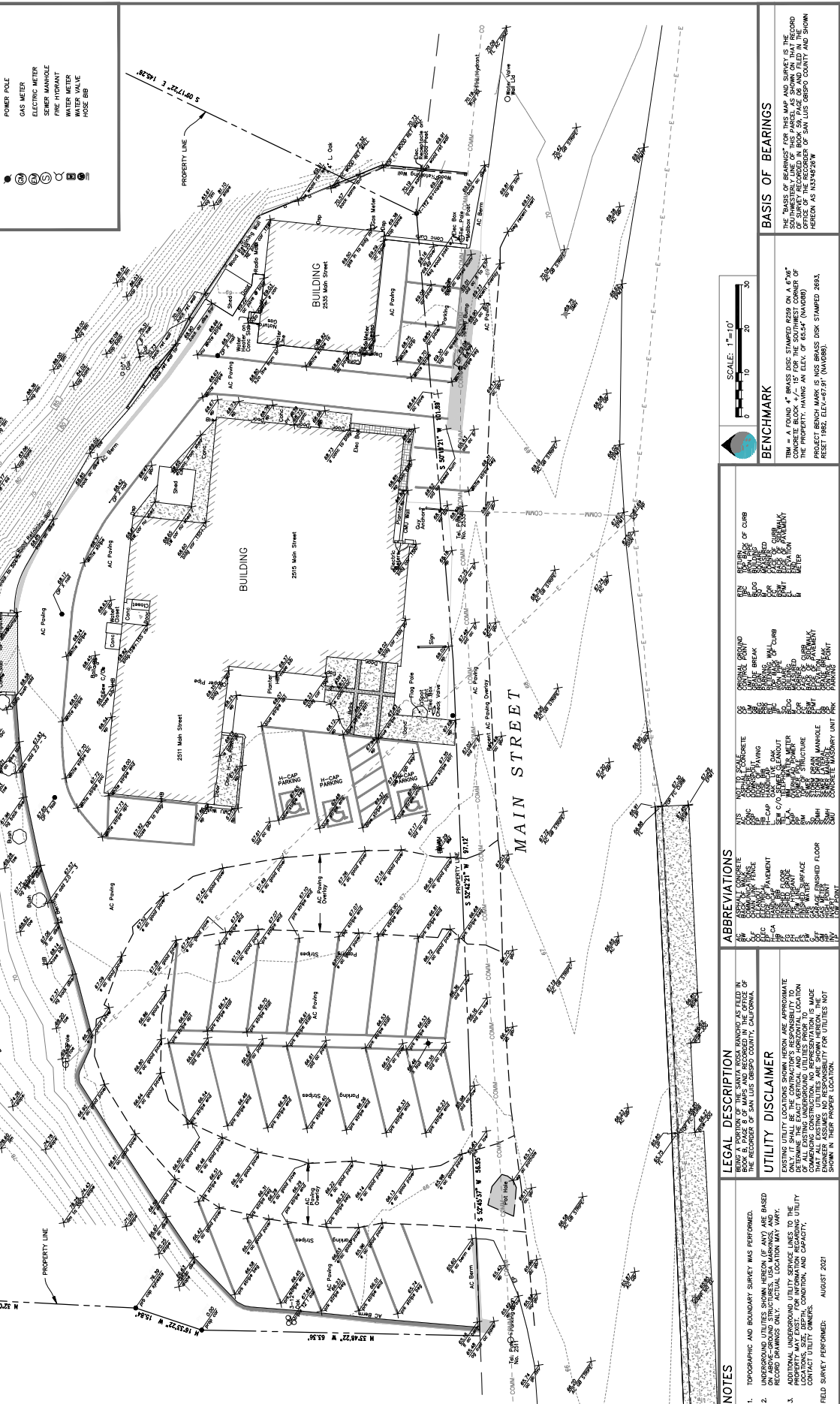
DATE:	9/17/2021
DESCRIPTION:	ADDITIONAL POINTS TO LEGEND
REVISIONS:	
DRAWN:	DW
CHECKED:	DB
CLIENT:	C.H.C. DISTRICT
PROJECT NO.:	17075
PROJECT NAME:	2515 MAIN STREET
LOCATION:	CAMBRIA, CA
APPROVAL:	APPROVE LEGEND AND ABBREVS
DATE:	9/17/2021
DESCRIPTION:	ADDITIONAL POINTS TO LEGEND
REVISIONS:	

TOPGRAPHIC MAP AND SITE SURVEY
 CAMBRIA COMMUNITY HEALTH
 2515 MAIN STREET
 CAMBRIA, CA
 PROJECT NO. 17075
 DW
 C.H.C. DISTRICT

DATE: AUG. 27, 2021
 SHEET: 1
 SCALE: 1"=10'

SYMBOL LEGEND

---	APPROX. SUBJECT PROPERTY LINE
---	APPROX. ADJOINING PROPERTY LINE
---	APPROX. STREET CENTERLINE
---	OVERHEAD POWER OR COMM.
---	WALL
---	BUILDING
---	CONCRETE SURFACING
---	POWER POLE
---	GAS METER
---	ELECTRIC METER
---	FIRE HYDRANT
---	SEWER MANHOLE
---	WATER VALVE
---	HOSE BIB



SCALE: 1"=10'

BENCHMARK

THE "BASIS OF BEARINGS" FOR THIS MAP AND SURVEY IS THE SOUTHWEST CORNER OF THIS PARCEL AS SHOWN ON THE RECORD MAP OF THE PROJECT OF SAN LUIS OBISPO COUNTY AND SHOWN HEREON AS N33°48'28" W
 PROJECT BENCH MARK IS NGS BENCH MARK STAMPED 2893, PROJECT 1062, ELEV. 1097.21' (NAVD83).

ABBREVIATIONS

AW	ASPHALT CONCRETE
CA	CONCRETE
CC	CONCRETE CURB
CD	CONCRETE DRIVE
CE	CONCRETE EDGE
CF	CONCRETE FINISH
CG	CONCRETE GROUND
CH	CONCRETE HATCH
CI	CONCRETE INTERIOR
CJ	CONCRETE JOINT
CK	CONCRETE KEY
CL	CONCRETE LANDING
CM	CONCRETE MASONRY
CP	CONCRETE PAVEMENT
CQ	CONCRETE QUARRY
CR	CONCRETE RAMP
CS	CONCRETE SIDEWALK
CT	CONCRETE TYPING
CU	CONCRETE UTILITY
CV	CONCRETE VENT
CW	CONCRETE WALL
CX	CONCRETE WINDOW
CY	CONCRETE YARD
CZ	CONCRETE ZONE
DA	DRAINAGE
DB	DRAINAGE BASIN
DC	DRAINAGE CHANNEL
DD	DRAINAGE DITCH
DE	DRAINAGE DRAIN
DF	DRAINAGE FLOW
DG	DRAINAGE GULLY
DH	DRAINAGE HATCH
DI	DRAINAGE INTERIOR
DJ	DRAINAGE JOINT
DK	DRAINAGE KEY
DL	DRAINAGE LANDING
DM	DRAINAGE MASONRY
DN	DRAINAGE NETWORK
DO	DRAINAGE OPENING
DP	DRAINAGE PAVEMENT
DQ	DRAINAGE QUARRY
DR	DRAINAGE RAMP
DS	DRAINAGE SIDEWALK
DT	DRAINAGE TYPING
DU	DRAINAGE UTILITY
DV	DRAINAGE VENT
DW	DRAINAGE WALL
DX	DRAINAGE WINDOW
DY	DRAINAGE YARD
DZ	DRAINAGE ZONE

LEGAL DESCRIPTION

BEING A PORTION OF THE SANTA ROSA TRACT AS FILED IN BOOK 8, PAGE 8 OF MAPS AND RECORDED IN THE OFFICE OF THE RECORDER OF SAN LUIS OBISPO COUNTY, CALIFORNIA.

UTILITY DISCLAIMER

EXISTING UTILITY LOCATIONS SHOWN HEREON ARE APPROXIMATE AND THE CONTRACTOR'S RESPONSIBILITY TO VERIFY THE LOCATION OF ALL EXISTING UNDERGROUND UTILITIES PRIOR TO MAINTENANCE OF THE PROJECT. THE CONTRACTOR SHALL BE RESPONSIBLE FOR VERIFYING THE LOCATION OF ALL EXISTING UTILITIES ARE SHOWN HEREON. THE CONTRACTOR SHALL BE RESPONSIBLE FOR VERIFYING THE LOCATION OF ALL EXISTING UTILITIES ARE SHOWN HEREON. THE CONTRACTOR SHALL BE RESPONSIBLE FOR VERIFYING THE LOCATION OF ALL EXISTING UTILITIES ARE SHOWN HEREON.

NOTES

1. TOPOGRAPHIC AND BOUNDARY SURVEY WAS PERFORMED.
2. UNDERGROUND UTILITIES SHOWN HEREON (IF ANY) ARE BASED ON ABOVE-GROUND STRUCTURES, USA MAPS, AND RECORD DRAWINGS ONLY. ACTUAL LOCATION MAY VARY.
3. PROPERTY MAY EXIST FOR INFORMATION REGARDING UTILITY CONTRACT ONLY. ORDER, LOCATION, CONDITION, AND CAPACITY.

FIELD SURVEY PERFORMED: AUGUST 2021